

Main Specifications

Dimensions (mm)									
Wheel Base		Long			Extra Long			Ultra Long	
		3850			4200			4500	
General	Length	6695	7015		7260	7365		7650	8000
	Width	2028 (Door Handle)							
	Height	2325 (No Roof Spoiler)							
Tire Tread		Front:1732,Rear:1823							
Overhang	Front	1135							
	Rear	1710	2030		1925	2030		2015	2365
C.A (Cab to rear axle)		3260			3610			3910	
C.E (Cab to end of frame)		4965	5180		5530			5920	6165
Minimum Ground Clearance		140							
Minimum Turning Radius (m)		7.72			8.41			9.00	
Engine Parameters									
Engine		CUMMINS 3.8							
Piston Displacement (cc)		3800	3760		3800	3760		3800	3760
Emission Standard		Euro6	Euro5	Euro3	Euro6	Euro5	Euro3	Euro6	Euro5 Euro3
Max. Torque (ps/N.m)		170/600	168/600		170/600	168/600		170/600	168/600
Transmission		FAST 8JS75TC (MT) ZF6AS1110TO (AMT)							
Speed Ratio		4.333 (OPT: 4.875)							
Chassis									
Driver's Seat		LHD	LHD,RHD	LHD	LHD,RHD	LHD	LHD,RHD		
Suspension		Front:Taper Leaf,Rear:Multi Leaf							
Frame (mm)		Height:210,Width:860							
Brakes		Full Air							
Tires (STD)		235/75R17.5-14PR							
Fuel Tank Capacity (ℓ)		200 (Aluminium)							
Weight (kg)									
Empty vehicle weight (standard configuration)		3510~3520	3460 ~ 3575		3535~3540	3475 ~ 3590		3605~3610	3540 ~ 3655
GVW		11000							
Features									
Standard		Cloth Seat, Power Window, Day Time Running Lights(LED), Collapsible Steering Wheel , ABS, Exhaust Brakes							
Option		Cruise Control, Tachograph, RADIO+R.V.C, VDC, FCA, Dual Airbag							

Hyundai Truck & Bus (China) Co., Ltd.

Address Xiandai Avenue No.1, Chengnan Industrial Development Zone,

Yanjiang District, Ziyang City, Sichuan, China

E-mail Trucknbus@hyundai.com

https://en.hyundai-trucknbus.com.cn/

YouTube @HYUNDAITRUCKBUSCHN

Statement: The specifications and policies in this brochure are for reference only and not a basis for accepting product orders. Please consult your local dealer for details. HTBC reserves the right to amend the contents, and the brochure is subject to change without prior notice

Version Number:202504



Mighty GT11 Builds Your Business

Modern design with simple lines and clear contours that create a bold style



The interior features a sedan-like style, with a human-centered design and a scientifically optimized layout, offering a comfortable driving experience



Horizontal Dashboard Layout

The dash panel features a new horizontal layout with a simpler, more modern look. Larger logically organized control switches for easier and more intuitive operation

Comfortable Interior

More storage space



Automated Mechanical Transmission

Comfortable & convenient



Adjustable Seats

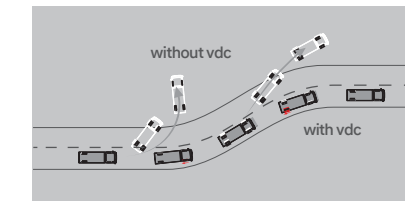
The driver's seat offers up to 225mm room for adjustment, while the backrest tilts up to 14 degrees for unparalleled comfort



Performance & Safety

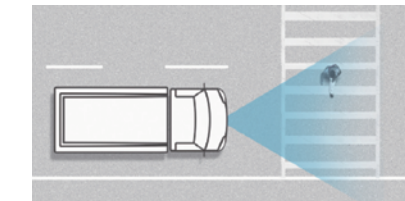
VDC

Vehicle Dynamics Control



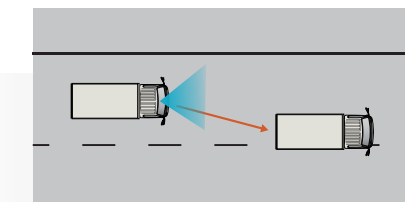
FCA

Forward Collision-Avoidance Assist



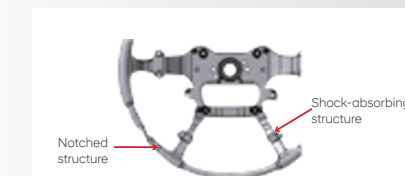
LDWS

Lane Departure Warning System



Impact Collapse Wheel

The steering wheel automatically collapses in the event of a collision to protect the driver



Mighty GT11 series boasts excellent performance, outstanding payload capacity, and stability. Every detail reflects its supreme quality. It is designed to enhance your safety on the road, and the Vehicle Dynamics Control system ensures excellent safety

ISF3.8s



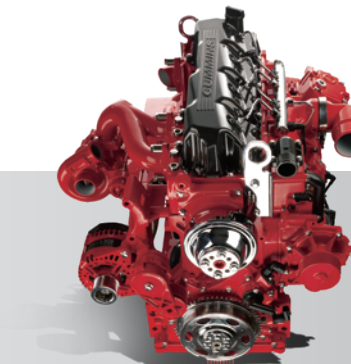
Max. Power

170PS(E6) 168PS(E3/E5)



Max. Torque

600N.m



Modular design engine of which the number of parts and the failure rate were reduced by 40% compared to similar brands

